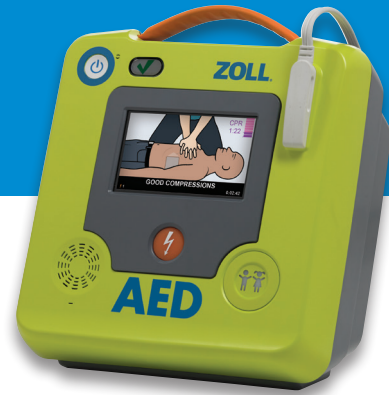


# ZOLL AED 3<sup>®</sup>

## Technical Specifications



### Enhanced Real CPR Help

The ZOLL AED 3<sup>®</sup> automated external defibrillator (AED) provides detailed CPR guidance with proprietary Real CPR Help<sup>®</sup> technology. More powerful full-color images and a CPR cycle timer, combined with voice and text prompts, help guide responders through the rescue. The Real CPR Help integrated, real-time CPR feedback tells and shows rescuers when they need to “Push Harder” or when they are doing “Good Compressions,” so they know when they are administering high-quality CPR.

### Integrated Pediatric Rescue

Pediatric rescue is made easier with ZOLL's unique CPR Uni-padz<sup>™</sup> electrodes and a child-mode setting. Universal pad design provides rescuers with a single, versatile solution to treat both adult and pediatric victims of SCA by using the same set of electrode pads and simply activating child mode.

### Low Total Cost of Ownership

Longer-lasting 5-year battery and electrodes reduce AED device maintenance requirements. This adds up to less maintenance, improved device readiness, and the benefit of a lower total cost of ownership over the life of your ZOLL AED 3.

### WiFi Connectivity

Easily manage your suite of devices via the cloud. Every ZOLL AED 3 is equipped with WiFi connectivity for seamless communication with AED program management systems through your wireless network. Once enabled, the ZOLL AED 3 will automatically report its readiness status, report a failed self-test, and will send email alerts so you can take the appropriate corrective action and ensure your AEDs are ready in an emergency.

### Smart Technology

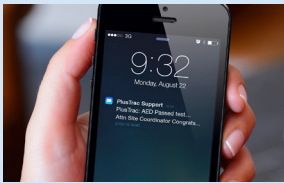
A fully interactive touch-screen display and onboard USB port enables fast and easy configuration, upgrades, and downloads of event data. Smart electrodes and battery can communicate expiration dates, lot numbers, and power-level status, which can be viewed on the display or transmitted over WiFi. Dual orientation with the ZOLL AED 3 optimizes visibility of the display by allowing it to lay flat or stand upright.



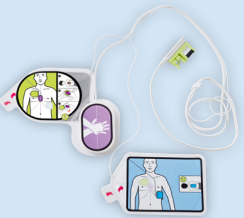
Real CPR Help assists rescuers in delivering high-quality CPR by providing real-time feedback on chest compression rate and depth.



Activate child mode for pediatric rescue with CPR Uni-padz.



Optional cloud connectivity can enable automatic reporting of device status.



Universal CPR Uni-padz can be used for both adult and child rescues. They are the only pads that last 5 years and also include an integrated rescue kit.

## ZOLL AED 3 Specifications

### Defibrillator

**Protocol:** Semi-automatic and Fully Automatic configuration

**Waveform:** ZOLL Rectilinear Biphasic™

**Defibrillator Charge Hold Time:** 30 seconds; ZOLL AED 3 Automatic model: 3 seconds prior to automatic shock delivery

**Energy Selection:** Factory preprogrammed selection (Adult: 120 J, 150 J, 200 J; Child: 50 J, 70 J, 85 J)

**Patient Safety:** All patient connections are electrically isolated

**Charge Time:** Less than 10 seconds with new battery

**Pre-shock Pause:** 8 seconds with new battery

**Electrodes:** ZOLL CPR Uni-padz™

**Self-test:** Configurable automatic self-test every day or every 7 days. Default: every 7 days. Monthly full-energy test (200 J).

**Automatic Self-test Checks:** Battery capacity, status, and expiration; electrode connection and expiration; ECG and charge/discharge circuits; microprocessor hardware and software; CPR circuitry and pads sensor; audio circuitry

**Compression Depth:** 1.9 cm to 10.2 cm; 0.75 in to 4 in

**Defibrillation Advisory:** Evaluates defibrillation pad connection and patient ECG to determine if defibrillation is required

**Shockable Rhythms:** Ventricular fibrillation with average amplitude >100 microvolts and wide complex ventricular tachycardia with rates greater than 150 BPM for adults, 200 BPM for pediatrics. For ECG analysis algorithm sensitivity and specificity, refer to ZOLL AED 3 Administrator's Guide.

**Patient Impedance Measurement Range:** 10 ohms to 300 ohms

**Defibrillator:** Protected ECG circuitry

**Display Format:** High-resolution LCD with capacitive touch panel

**Display Screen Size:** 5.39 cm x 9.5 cm; 2.12 in x 3.74 in

**Data Recording and Storage:** User-configurable for 1 or 2 clinical events for total of 120 minutes. Includes ECG, impedance measurements, device prompts and CPR data.

**Data Recovery:** Controlled by touchscreen, uploaded to USB memory stick, or ZOLL CaseReview over a Wi-Fi network

**Internal Clock Synchronization:** Coordinated Universal Time (UTC) synchronization occurs when communicating with the ZOLL Online server.

### Device

**Size:** (H x W x D) 12.7 cm x 23.6 cm x 24.7 cm; 5.0 in x 9.3 in x 9.7 in

**Weight:** 2.5 kg; 5.5 lbs (with battery)

**Power:** Battery

**Wireless:** 802.11 a/b/g/n

**Security Protocols:** WPA 1, WPA 2, WPA Personal, WPA Enterprise

**Port:** USB 2.0

**Rescue Accessory Pack Contents:** Non-latex gloves, CPR barrier mask, razor, paper towel, and towelette

**Device Classification:** Class III and internally powered per EN60601-1

**Design Standards:** Meets applicable requirements of EN 60601-1, IEC 60601-1-11, IEC 60601-2-4

### Environmental

**Operating Temperature:** 0° to 50°C; 32° to 122°F

**Storage Temperature:** -30° to 70°C; -22° to 158°F

**Humidity:** 10% to 95% relative humidity, non-condensing

**Vibration:** IEC 60068-2-64, Random, Spectrum A.4, Table A.8, Cat 3b; RTCA/DO-160G, Fixed Wing Aircraft, Section 8.6, Test Cat. H, Aircraft Zone 1 and 2, EN 1789, Sweep per EN 60068-2-6 Test Fc.

**Shock:** IEC 60068-2-27; 100G

**Altitude:** -381 m to 4573 m; -1250 to 15,000 ft

**Particle and Water Ingress:** IP55

**Drop Test:** 1 m; 3.28 ft

### Battery

**Battery Capacity:** Typical new battery running at an ambient temperature of +20° C to +25° C (68° F to 77° F) can provide 140 defibrillator discharges at maximum energy (200 joules), or 6 hours of continuous monitoring (with 2-minute CPR periods). Note: CPR periods shorter than 2 minutes can decrease the operating time that can be obtained from a new battery.

**Type:** Disposable, sealed lithium manganese dioxide

**Battery Standby Life (once installed):** 5 years with weekly self-test. End of life indicated by blank status window (typical remaining shocks: 9).

**Battery Shelf Life:** Store for up to 2 years at 23°C (77°F) prior to installing in AED 3 to maintain above battery life

**Temperature :** 0°C to 50°C (32°F to 122°F)

**Humidity:** 10% to 95% (non-condensing)

**Weight:** 317.5 grams; 0.7 lbs

**Size:** (H x W x D) 27.75 mm x 133 mm x 88 mm; 1.0 in x 5.16 in x 3.5 in

**Nominal Voltage:** 12 volts

### CPR Uni-padz

**Shelf Life:** 5 years

**Conductive Gel:** Polymer Hydrogel

**Conductive Element:** Tin

**Packaging:** Multilayer foil laminate pouch

**Impedance Class:** Low

**Cable Length:** 142 (+/-3.8) cm; 56 (+/- 1.5) in

**Design Standards:** Meets requirements of IEC 60601-2-4, 2010

To Order Call:

**AEDSuperstore®**

World's Largest Automated External Defibrillator Source

**800.544.0048**  
help@aeds.com

**www.AEDSuperstore.com**

1800 US Hwy 51 N | Woodruff, WJ 54568

For subsidiary addresses and fax numbers, as well as other global locations, please go to [www.zoll.com/contacts](http://www.zoll.com/contacts).

Specifications subject to change without notice.

©2020 ZOLL Medical Corporation. All rights reserved. Real CPR Help, Uni-padz, ZOLL, ZOLL AED 3, and ZOLL Rectilinear Biphasic are trademarks or registered trademarks of ZOLL Medical Corporation in the United States and/or other countries. All other trademarks are the property of their respective owners. Printed in U.S.A. MCN PP 2003 0414

**ZOLL®**